



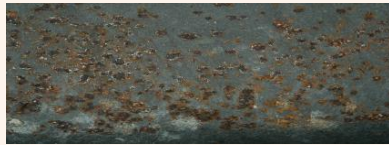
Product Data Sheet

CON 600-TL (+55°C)

Relevant Test Standards:

Water condensation tests:

DIN EN ISO 6270-2:2005
BS 3900 F2
BS 3900 F15
ASTM D2247



Legend

CH – Constant Humidity
AT – Alternating Temperature
AHT- Alternating Humidity and Temperature
AIR – Forced air circulation
AWRF – Automatic water refill

Applicable for the following water condensation tests

Constant Humidity (CH) test

- + DIN EN ISO 6270-2:2005
- + ASTM D2247

Cabinets with AIR, AWRF option are applicable for additional water condensation tests:

- + alternating temperature (AT)
- + alternating temperature and humidity (AHT)

Order Information

Basic model:

CON 600-TL

Article numbers versions:

V.704.065.050 (CH)
V.704.465.050 (AIR, AWRF)

Sales & Support:

+49 5205 87963 0

Monday to Friday
8:00 am – 17:00 pm

VLM Labortechnik GmbH
Heideblümchenweg 50
33689 Bielefeld

com info@vlm-labtec.com
com www.vlm-labtec.de

Specification subject to changes
Pictures might differ from original

Product Description

These compact and easy to operate bench top cabinets are designed for conducting Constant Humidity (CH) and alternating temperature / humidity corrosion tests pursuant to the most common corrosion tests international DIN EN ISO 6270-2:2005 and ASTM D2247.

Customer Benefits

- + Cost effective solution for basic water condensation corrosion tests (CH, AT, AHT)
- + Compact top loading (chest) design
- + The VLM technology allows the best possible reproducibility of the temperature conditions
- + The test chamber with the bottom made of steel is more robust and less susceptible for damages compared to the competitive products made of glass reinforced plastic
- + Lower cost of ownership compared to the competitive products where the test chamber is made of glass reinforced plastic (shorter test periods, better energy efficiency, easier for service and maintenance, longer life cycle, more resistive to mechanical damages)
- + User friendly control system with preconfigured test parameters



Product Data Sheet

CON 600-TL (+55°C)

Relevant Test Standards:

Water condensation tests:

DIN EN ISO 6270-2:2005

BS 3900 F2

BS 3900 F15

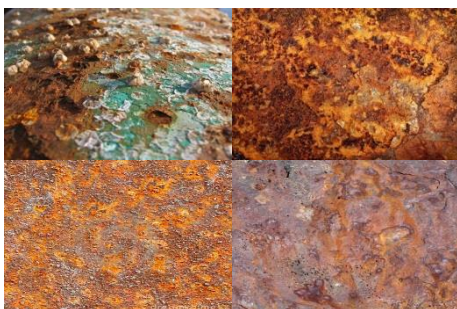
ASTM D2247



Figure 1 JUMO controller

The following accessories are included:

- + 5 rods for supporting test specimen
- + 2 m exhaust hose Ø 50 mm
- + 2 m drain water hose Ø 18 mm
- + 1 female connector for compressed air hose (size no. 5)



Technical Specifications

Capacity	ca. 600 L
Inner test chamber dimensions W/D/H1/H2	ca. 910 x 710 x 660 / 1000 mm
Outer dimensions of the casing (overall) W/D/H	ca. 1485 x 788 x 1213 mm
Required power supply	230V, 50/60Hz, 800W
Materials used	The walls of the chamber are made of Polypropylene while the bottom is made of stainless steel and coated with ECTFE. The walls have milled openings for supporting rods
Heating	Flat Micanite heaters under the bottom of the chamber for fast and uniform heat transfer
Sensors	- 1x corrosion resistant and highly sensitive temperature sensor
Temperature stability	±0,2 C°
Aeration (type AIR)	timer controlled built-in fan (capacity ca. 16 m ³ /h)
Timer	Two channel timer for automated switch over from heating to aeration mode
Weight	230 kg
Communication	RS 232 interface (optional)
Other specification	
Purity demineralized water / filling volume / fitting	< 20µS/cm / ca. 3,5 L / ¾" outer diameter Option: Automatic water refill
Tap water (connection type)	Always via Ion-exchanging cartridge (¾" outer diameter)
Compressed Air	6-8 bar (connection nipple size 5)
Waste water, drain	Pipe fittings (spiral hose ID 18mm)
Exhaust pipe outer diameter	Pipe fitting (50 mm external diameter)
Number of supporting rods / max load	5 stainless steel rods coated with plastic / 30 kg each

Process Control

- + User friendly, microprocessor based controller JUMO dTRON (Figure 1)
- + Programmable timer function
- + Option: VisiCORR software for visualisation of test trends, only in combination with RS 232 (option)
- + Restricted access for authorised operators (security code)

Operating system Constant Humidity (CH) according to ISO 6270-2

- + Flat heaters under the bottom of the chamber for uniform and rapid heating of the water in the trough
- + Temperature stability in the chamber ± 0,2°C
- + Air fan with adjustable rotation speed for controllable drying of specimen in the Drying Phase;
- + Parameters for standard water condensation tests are already preconfigured

Operating system AIR

- + A fan with controllable RPM is used for forced drying phase after the Constant Humidity phase

Operating system AWRP

- + System for automatic refilling of the water in the trough of the chamber at the beginning of the Constant Humidity test.